



SIZES AVAILABLE:

2" to 36"

Custom Floats Available, ask us!

At Surface Floats

Great For Any Dredging or Pumping Application!

CLAMP TITE

Clamp Tite™ compresses and adds friction to the pipeline preventing slippage. Neptune Flotation is proud to be the only supplier that has offered a solution to this common issue.

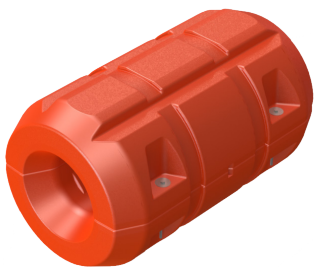
STACK-N-LOCK

Built in legs on the bottom of the float and molded-in recesses on the top of float allow for easy stacking while transporting or storing.

EZ-GLIDE

Tapered Ends on the outside of the Pipe Float decrease water and wind resistance. Tapered ends on the inside of float allow the pipeline to move freely.

OTHER GREAT FEATURES:



- Tough, crack resistant, UV inhibiting polymer resin ensures a long life
- Handholds ease installation
- Built in legs act as alignment guides when installing the float

OPTIONS:

- Ice Protection
- Cable Attachment
- Hose Attachment
- Safety Light
- Safety Whip Flag

CDN Distributor of Neptune Flotation Products

Nelco Marine

Phone: 250.354.9011 www.nelcomarine.com

Email: nelcomarine@gmail.com



SIZES AVAILABLE:

2" to 36"

Custom Floats Available, ask us!

Suspension Floats

Great for Suspending pipe under the water surface!

CLAMP TITE

Clamp Tite™ compresses and adds friction to the pipeline preventing slippage. Neptune Flotation is proud to be the only supplier that has offered a solution to this common issue.

MODULAR DESIGN

Allows floats to be easily stored and transporting. This reduces freight costs and storage footprints.

ADJUSTABLE DEPTH

Neptune Suspension Floats can be customized for your specific application, including the depth of your pipeline under the surface of the water.

OTHER GREAT FEATURES:



- Tough, crack resistant, UV inhibiting polymer resin ensures a long life
- Very customizable and versatile

OTHER USES:

- **Suspend a Pump**
- **Boat Traffic Control**
- **Mooring Buoys**

Canadian Distributor of Neptune Flotation Products

Nelco Marine

Phone: 250.354.9011 www.nelcomarine.com

Email: nelcomarine@gmail.com