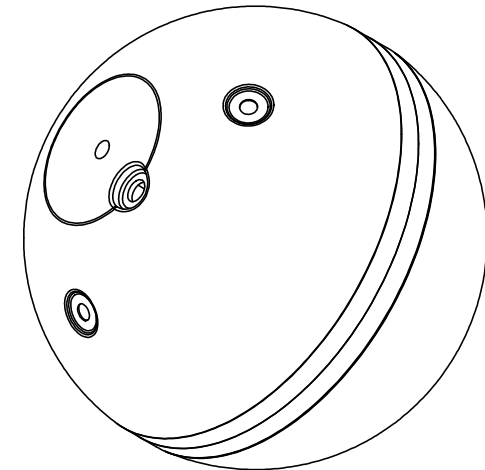
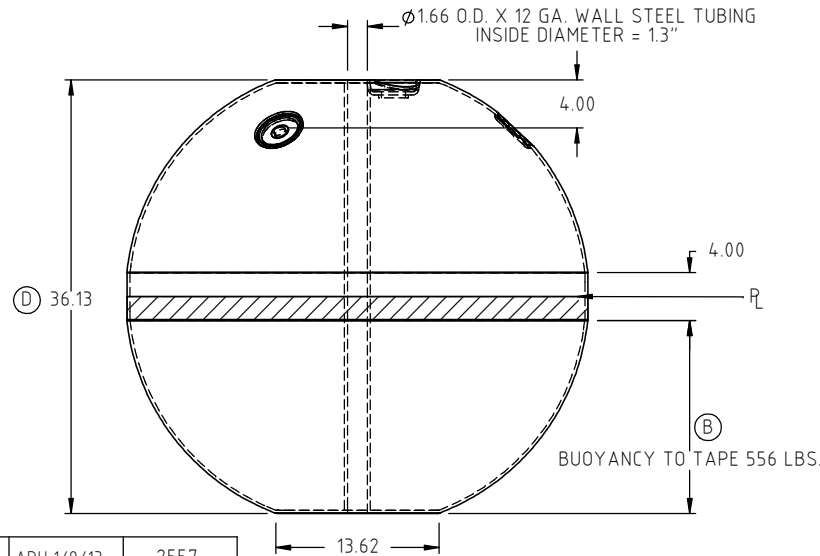
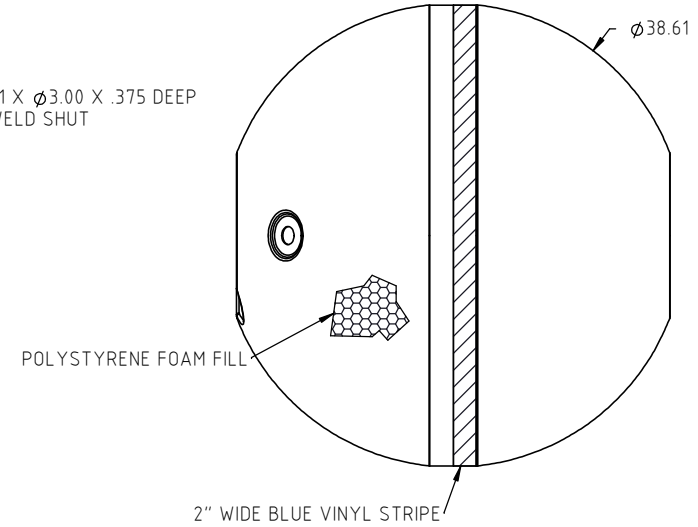
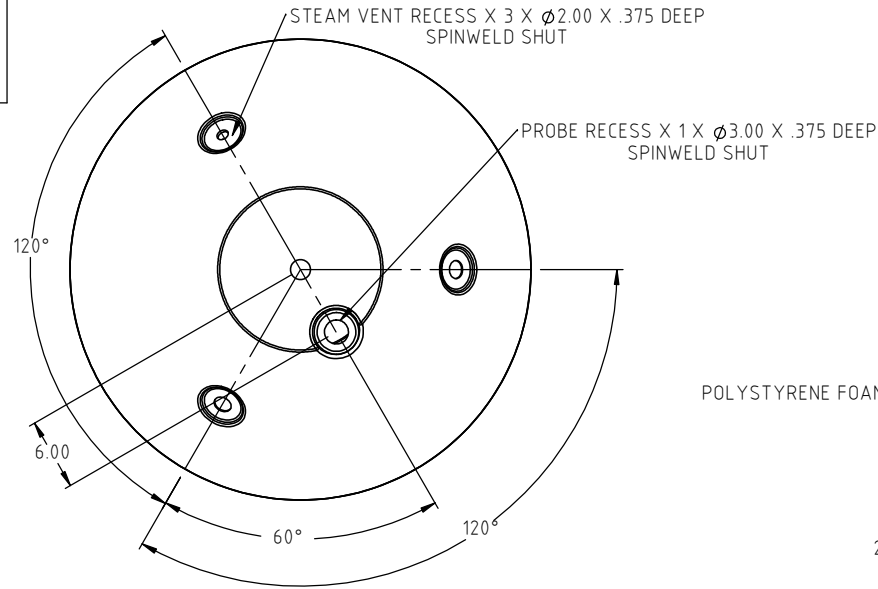


© DEN HARTOG INDUSTRIES, INC.

Copyright. All information furnished within this document, electronic file or design correspondence is the property of Den Hartog industries, Inc. and shall not be used, disclosed to others or copied without the expressed written consent of Den Hartog Industries, Inc.

FFMB-3838RND

D



D	36.13" WAS 36.50"	ADH 1/9/13	2557	13.62
C	CHANGE P.N.	REH 10/27/10	2106	DRAWN / DATE REH 2/10/03
B	ADD USEABLE BUOYANCY	DHJ 3/28/08	1638	MATERIAL E/M 8460, WHITE
A	SHAFT CUT FLUSH WITH ENDS	5/20/03		APPRD. / DATE DHJ 2/10/03
REV	DESCRIPTION	BY / DATE	CCN	
ALL DIMENSIONS ARE IN DECIMAL INCHES TOLERANCES UNLESS OTHERWISE SPECIFIED		THIRD ANGLE PROJECTION ANSI 14.5M		SHOT WEIGHT: 41.0 LBS
POLYETHYLENE	METAL DECIMAL ± .125" FRACTION ± 1/4" ANGLE ± 1°			NOTES: 1.) .250 WALL 2.) SHIP IN CARTON 19148
±1% @ 68°F				SHIPPING WEIGHT: 65.0 LBS
				FINISH:



Den Hartog
INDUSTRIES, INC.

Ace Roto-Mold Injection Molding Blow Molding Sowjoy

4010 HOSPERS DRIVE S. BOX 425, HOSPERS, IOWA 51238-0425

DESCRIPTION BUOY, 38" DIA.	
SCALE N.S.	PART NO. FFMB-3838RND